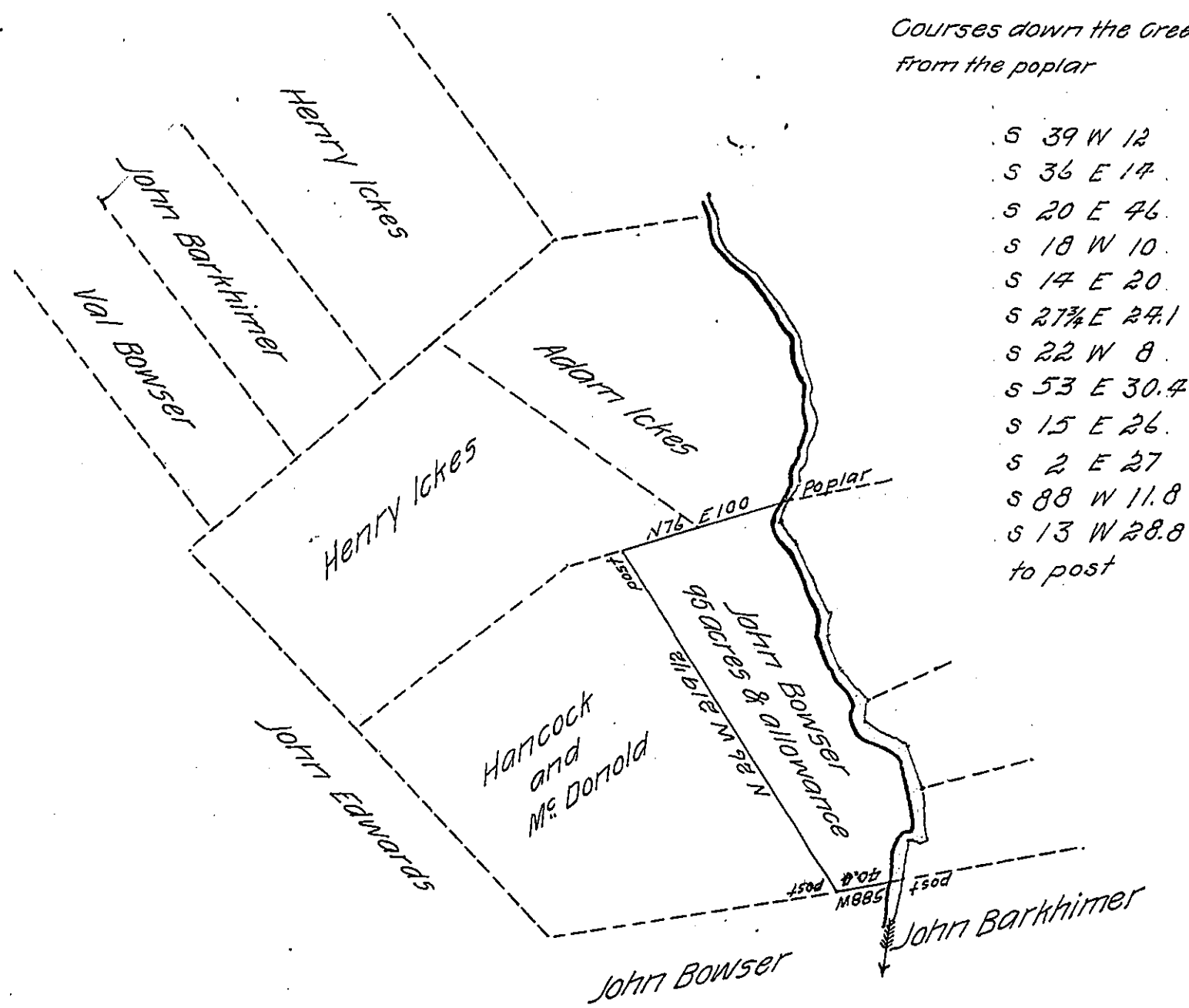


FORM No. 1.

Courses down the Creek
from the poplar



- S 39 W 12
- S 36 E 14
- S 20 E 46
- S 18 W 10
- S 14 E 20
- S 27 1/4 E 24.1
- S 22 W 8
- S 53 E 30.4
- S 15 E 26
- S 2 E 27
- S 88 W 11.8
- S 13 W 28.8
- to post

Situate in St. Clair Township Bedford County containing 95 acres
and allowance of six per cent. &c. being part of a larger tract of 608 1/4 acres
originally surveyed for George Shoemaker on warrant dated the 1st day
of June 1763 surveyed for George Bowser the 27th day of November 1835
To Jacob Spangler Esq. S.G. Robert Stuart D.S.

IN TESTIMONY that the above is a copy of the original remaining on file in
the Department of Internal Affairs of Pennsylvania, made
conformably to an Act of Assembly approved the 16th day of
February 1833, I have hereunto set my hand and caused
the Seal of said Department to be affixed at Harrisburg,
this first day of February 1907

Isaac R. Brown
Secretary of Internal Affairs.